

# MODERN STEEL™

garage doors



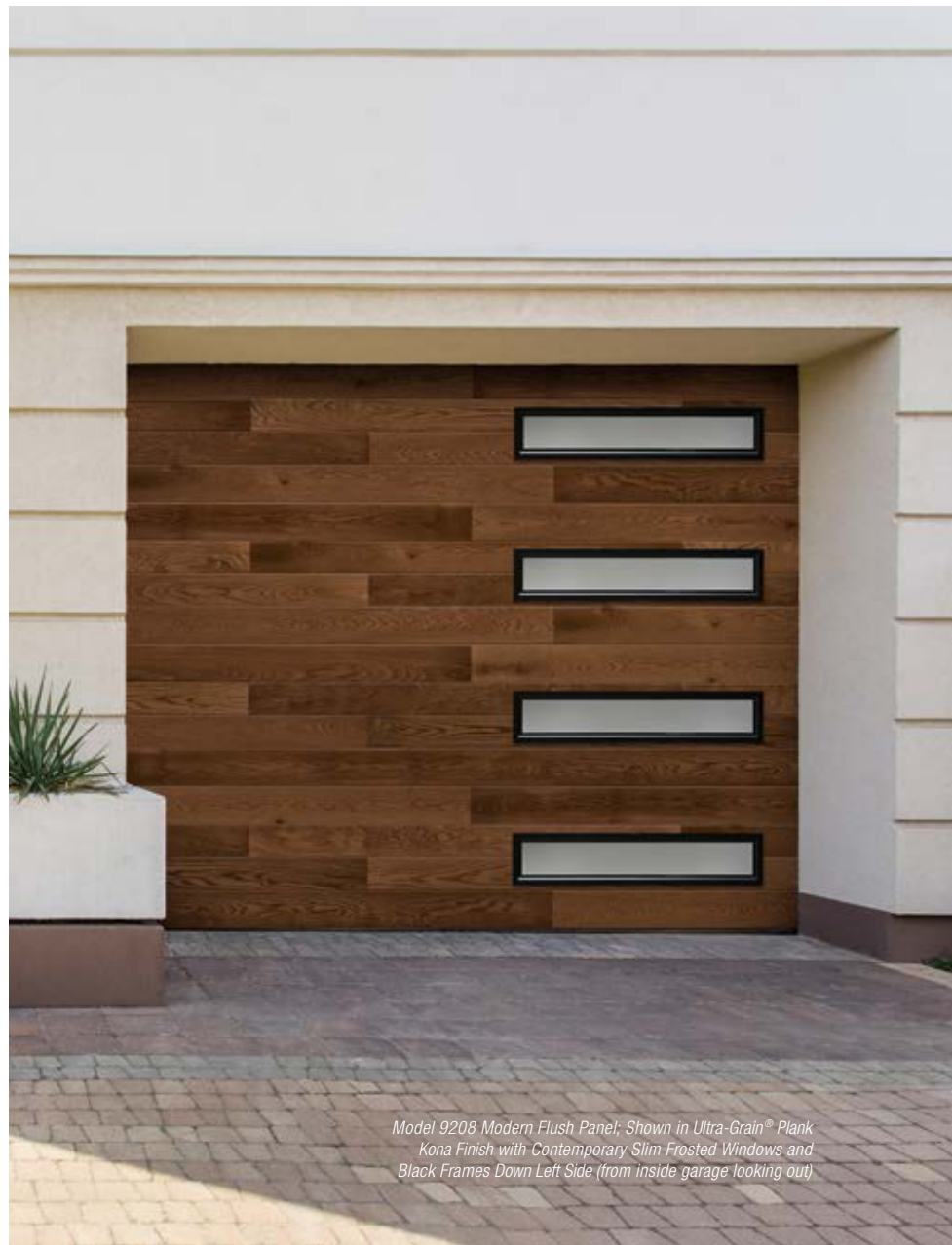
America's Favorite Garage Doors®



*Model 9209 Modern Grooved Panel, Shown in Mocha Brown with Plain Short Windows Down Left Side (from inside garage looking out)*

# MODERN STEEL™ garage doors

Modern Steel™ garage doors complement contemporary and mid-century modern home styles. Doors are available with or without windows and with or without grooves in the panels. All are available in multiple paint, Ultra-Grain® and Lustra™ finishes to create the perfect look for your home.



*Model 9208 Modern Flush Panel; Shown in Ultra-Grain® Plank Kona Finish with Contemporary Slim Frosted Windows and Black Frames Down Left Side (from inside garage looking out)*

AVAILABLE WITH

**intellipcore**®  
insulation technology



**WARMER**

Energy efficiency provides year-round comfort



**QUIETER**

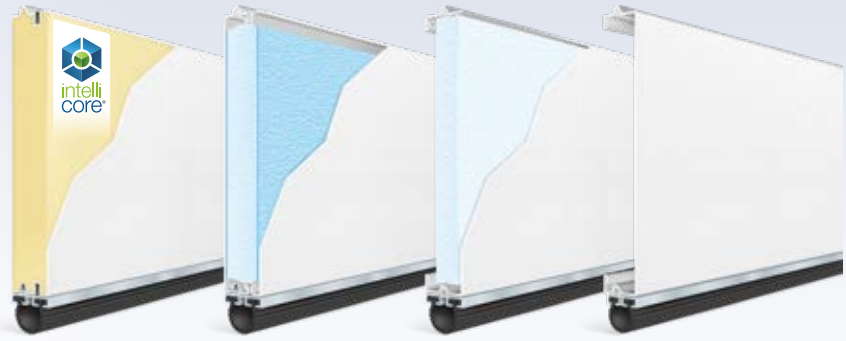
Dense insulation reduces noise by up to 16 decibels



**STRONGER**

Enhanced strength resists everyday wear and tear

# MODEL AVAILABILITY



## DOOR DESIGNS

Door design examples shown at 9' wide x 8' high  
Available window options listed below model number  
(See back cover for examples of window options)

TEXTURE

	3-LAYER				2-LAYER	1-LAYER
	2" Polyurethane	1-3/8" Polyurethane	2" Bonded Polystyrene	1-3/8" Bonded Polystyrene	1-5/16" Polystyrene	Non-Insulated
	18.4 R-value	12.9 R-value	9.0 R-value	6.5 R-value	6.3 R-value	

### MODERN FLUSH Door constructed using 24", 21" and 18" section heights

Texture	Model	Window Options	Material
Woodgrain	9202	Contemporary Windows	Woodgrain
	9132	Contemporary Windows	
Woodgrain	4302	Contemporary Windows	Woodgrain
	4132	Contemporary Windows	

### MODERN FLUSH Door constructed using 21" and 18" section heights

Texture	Model	Window Options	Material
Woodgrain	9201	Contemporary and Decorative Windows	Woodgrain
	9131	Contemporary and Decorative Windows	
Woodgrain	4301	Contemporary and Decorative Windows	Woodgrain
	4051	Decorative Windows	
Woodgrain	T42F	Decorative Windows	Woodgrain
	T40F	Decorative Windows	

### MODERN FLUSH Door constructed using 24", 21" and 18" section heights

Texture	Model	Window Options	Material
Stucco**	9208	Contemporary and Slim Windows	Stucco**
	9138	Contemporary Windows	
Stucco**	4308	Contemporary and Slim Windows	Stucco**
	4138	Contemporary Windows	

### MODERN GROOVED Door constructed using 24", 21" and 18" section heights

Texture	Model	Window Options	Material
Stucco*	9205	Contemporary Windows	Stucco*
	4305	Contemporary Windows	

### MODERN GROOVED Door constructed using 24" and 21" section heights

Texture	Model	Window Options	Material
Stucco**	9209	Contemporary and Slim Windows	Stucco**
	9139	Contemporary Windows	
Stucco**	4309	Contemporary and Slim Windows	Stucco**

COLOR AVAILABILITY	Standard White	Almond	Desert Tan	Sandtone	Bronze	Chocolate	Mocha Brown	Hunter Green	Gray	Charcoal	Black	Lustra™ Black	Lustra™ Charcoal	Lustra™ Silver	Ultra-Grain® Cypress Medium	Ultra-Grain® Cypress Cherry	Ultra-Grain® Cypress Walnut	Ultra-Grain® Cypress Slate	Ultra-Grain® Plank Kona	Ultra-Grain® Plank Coastal Gray
9202, 9205	■	■	■	■	■	■	■	■	■	■	■	■	■	■	■	■	■	■	■	■
9208	■	■	■	■	■	■	■	■	■	■	■	■	■	■	■	■	■	■	■	■
9209	■	■	■	■	■	■	■	■	■	■	■	■	■	■	■	■	■	■	■	■
9201	■	■	■	■	■	■	■	■	■	■	■	■	■	■	■	■	■	■	■	■
9132, 9138, 9139	■	■	■	■	■	■	■	■	■	■	■	■	■	■	■	■	■	■	■	■
9131	■	■	■	■	■	■	■	■	■	■	■	■	■	■	■	■	■	■	■	■
4302, 4305, 4308, 4309	■	■	■	■	■	■	■	■	■	■	■	■	■	■	■	■	■	■	■	■
4301	■	■	■	■	■	■	■	■	■	■	■	■	■	■	■	■	■	■	■	■
4132	■	■	■	■	■	■	■	■	■	■	■	■	■	■	■	■	■	■	■	■
4051	■	■	■	■	■	■	■	■	■	■	■	■	■	■	■	■	■	■	■	■
4138	■	■	■	■	■	■	■	■	■	■	■	■	■	■	■	■	■	■	■	■
T42F, T40F	■	■	■	■	■	■	■	■	■	■	■	■	■	■	■	■	■	■	■	■
4F	■	■	■	■	■	■	■	■	■	■	■	■	■	■	■	■	■	■	■	■

Calculated door section R-value is in accordance with DASMA TDS-163. For more information about color options see page 4.

\* Exterior steel surface on Ultra-Grain® Cypress finish doors has a woodgrain texture on Modern Steel™ garage doors.

† Exterior steel surface on a Lustra™ finish door has a smooth texture on Modern Steel™ garage doors.

## STANDARD COLORS



- Exterior steel on standard color doors will have either a stucco or woodgrain texture depending upon model chosen (see chart on page 3 for details).
- Doors can be painted to match the home's exterior using a high-quality latex exterior paint. Do not use oil-based paint.

*\*Additional charges apply.*

*Due to the printing process, colors may vary. See your Clopay Dealer for color samples. Not all colors available on all models. See previous page for complete color availability.*

## ULTRA-GRAIN® FINISH



- Painted steel surface simulates a stained door without the need of staining and the ongoing maintenance of wood.
- Woodgrain runs horizontal for an authentic, natural look.
- Available in Cypress Medium, Cherry, Walnut or Slate finishes that complement entry doors, shutters and other exterior stained wood products.
- Exterior steel surface on all Modern Steel™ Ultra-Grain® finish doors have a woodgrain texture to create a more natural appearance.
- Window frames, grilles and inserts are a solid color to coordinate with Ultra-Grain® finishes.

*Due to the printing process, colors may vary.*

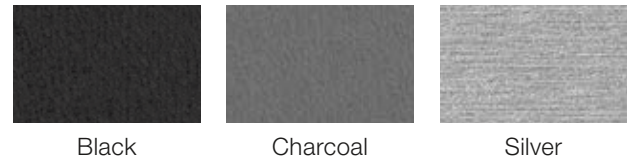
*Not all colors available on all models. See previous page for complete color availability. Additional charges apply.*

## CUSTOM PAINT OPTION



Color Blast® finish offers more than 1,500 Sherwin-Williams® color options to complement your home. This durable two-part paint system has been thoroughly tested and is backed by a five-year warranty.

## LUSTRA™ FINISH



Lustra™ finished garage doors feature a Black or Charcoal matte look, while Silver has a brushed metallic look. Door exterior has a smooth textured steel surface.

- These modern doors feature thick 24 gauge surface steel.
- Lustra™ doors were designed to be paired with narrow modern windows for a truly modern look.
- Lustra™ finished doors cannot be painted.

*Due to the printing process, colors may vary.*

*Not all colors available on all models. See previous page for complete color availability. Additional charges apply.*

## ULTRA-GRAIN® PLANK



- Available in Kona or Coastal Gray finishes that complement mid-century, farmhouse, coastal cottage and transitional home styles.
- Exterior steel surface has a wood-look plank design that runs horizontal, with clear and simple lines.
- Optional windows available in color matched frames or as a standout in Silver and Black accent colors.

*Due to the printing process, colors may vary.*

*Not all colors available on all models. See previous page for complete color availability. Additional charges apply.*



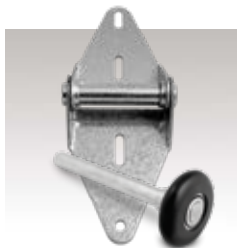
Model 9138 Modern Flush Panel; Shown in Black with Plain Long Windows In all Panel Locations

## ADDITIONAL FEATURES

- Tongue-and-groove section joints help seal out wind, rain and snow.
- Replaceable vinyl bottom weatherseal in a corrosion-resistant retainer helps seal out the elements.
- Clopay's Safe-T-Bracket® helps prevent serious injury that could occur if the bottom bracket were removed with the garage door closed and under tension.
- Color-matched exterior step plate/lift handles are durable and allow for safe opening and closing of your door.
- 2" thick polystyrene doors and all Intellicore® insulation doors comply with 2015 IECC air infiltration requirement of 0.40 cfm/ft<sup>2</sup> or less (IECC, Section C402.5.2).
- See your Clopay Dealer for WINDCODE® door availability.

For additional information about how to care for and maintain your door, visit: [www.clopaydoor.com/residential/support](http://www.clopaydoor.com/residential/support)

## HEAVY-DUTY HARDWARE



2" thick polystyrene doors and all Intellicore® insulation doors come standard with 10-ball nylon rollers and heavy-duty 14 gauge steel hinges.

## WARRANTIES

PAINT SYSTEM	WINDOW	HARDWARE
LIMITED LIFE WARRANTY	LIMITED 10YR WARRANTY	LIMITED 3YR WARRANTY

## RUST-PREVENTION SYSTEM



Steel skins are protected through a tough, layered coating system, including a hot-dipped galvanized layer, a protective metal oxide pretreatment and a baked-on primer and top coat.

## GREATER ENERGY EFFICIENCY



Thermal break\* separates the interior from the exterior skin to improve energy efficiency and comfort.

\*Thermal break is not present on 4051, 2-layer and 1-layer models.

## ENVIRONMENTAL ASSURANCE

Clopay doors are compliant with environmental laws and regulations. Clopay doors do not contain HFCs. All Clopay doors are compliant with:

- California SB 1013
- New Jersey A-5583/S-3919 – Greenhouse Gas Bill
- Washington HB 1112 – Hydrofluorocarbon Greenhouse Gas Emissions
- Canadian regulations amending the ozone-depleting substances and halocarbon alternatives regulations

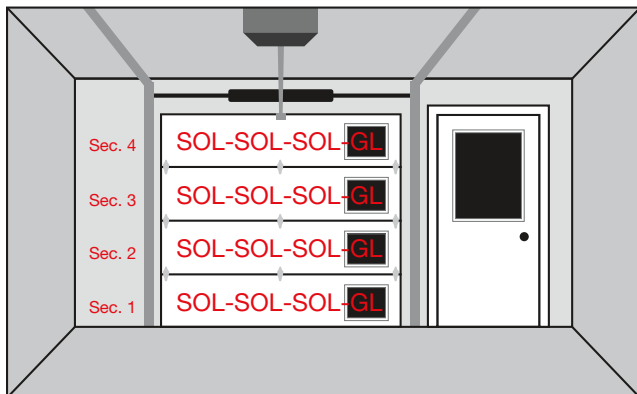


Model 4309 Modern Grooved Panel; Shown in Bronze with Contemporary Slim Frosted Windows and Black Frames Down Right Side (from inside garage looking out);

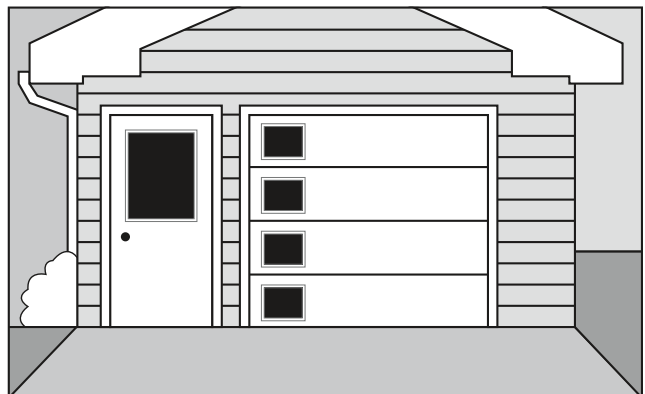
## CONTEMPORARY WINDOW ORIENTATION

When ordering contemporary window configurations please reference the examples provided to describe your desired window positions. **Note: Window configurations are described from inside the garage looking out.**

Example: Windows down right side (from inside garage looking out)



View from Inside Garage



View from Outside Garage



# WINDOW OPTIONS

Our windows add natural light to your garage while adding curb appeal to your home. All Clopay window frames are UV-protected and are color matched to our prefinished door colors. Window frames screw in from the inside for easy glass replacement or to change designs.

## CONTEMPORARY/ARCHITECTURAL SERIES WINDOWS

These windows are from Clopay's Contemporary/Architectural Series, featuring a larger viewing area and are available on select models and heights. Short windows are 19-1/2" x 16" and long windows are 42" x 16".

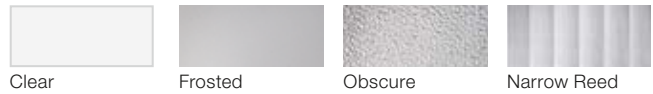
Available on These Models

- 9202 9139\*
- 9201 4302
- 9208\* 4301
- 9205 4308\*
- 9209\* 4305
- 9132 4309\*
- 9131 4132
- 9138\* 4138\*



\*Models available only with plain, rectangular grille and square grille windows.  
 †Ultra-Grain® Plank and Lustra™ finishes available only with plain windows.

Windows are available single pane or insulated in clear, frosted, obscure and narrow reed designs.

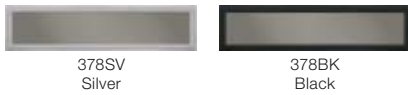


## CONTEMPORARY SLIM WINDOWS

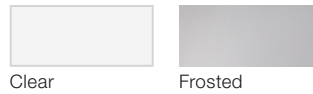
Contemporary Slim windows are designed to further enhance the clean aesthetic common to modern architecture. Contemporary Slim windows are 37" x 8" with aluminum frames available in powder coated silver or black.

Available on These Models

- 9208 4308
- 9209 4309



Windows are available insulated in both clear and frosted tempered glass.



## DECORATIVE INSERT SERIES WINDOWS

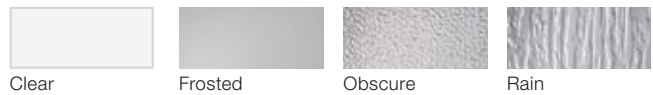
UV-protected cellular plastic insert designs snap into either the inside or outside of the window frame for easy cleaning or to change designs. Windows are offered in single strength, double strength, acrylic, obscure or insulated glass. Short windows are 19-1/2" x 12" and long windows are 40-1/2" x 12".

Available on These Models

- 9201 T42F
- 9131 T40F
- 4301 4F
- 4051



Windows are available single pane or insulated in clear, frosted, obscure and rain designs. Clear acrylic also available.



† Shown with clear glass.

‡ Sunset windows not available on Ultra-Grain® finish doors.

Additional charges for optional glass apply.

Acrylic windows require special cleaning. See care and maintenance manual.



Visit [clopaydoor.com](http://clopaydoor.com) or call 1-800-2CLOPAY (225-6729) for more information on Clopay, America's Favorite Garage Doors.

Follow us on



©2024 Clopay Corporation. All rights reserved.

RSDR-MODERNSTEELSS-15\_REV00242



DESIGN YOUR DOOR  
 OPEN CAMERA  
 AND POINT!